

The logo for Ashtons, featuring the word "Ashtons" in a white, sans-serif font with a green swoosh under the letter 'A', set against a dark blue rectangular background.

8 Station Square Strensall YO32 5ZL

£1,100 PCM

2



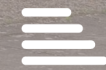
1



1



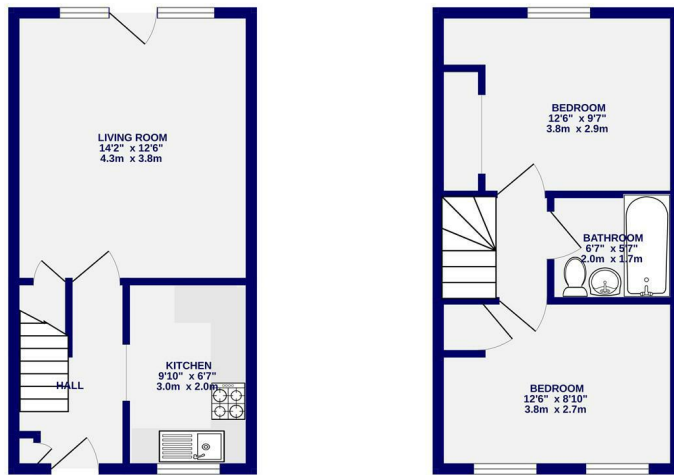
C



This well presented two bedroom town house offered on an unfurnished basis. Benefitting from being situated in the sought after village of Strensall close to local shops and amenities, and comprises of entrance hall, fully fitted kitchen with fridge/freezer, washing machine, oven and hob. Lounge with door leading to the rear garden. To the first floor are two double bedrooms and a family bathroom with shower over bath. Rear garden is lawned and has a shed. Parking space to front.

Available 12th May 26

Deposit £1200 / EPC Rating D / Council Tax Band B



TOTAL FLOOR AREA: 600 sq.ft. (55.7 sq.m.) approx.  
 Whilst every attempt has been made to ensure the accuracy of the floorplan, measurements of rooms and any other items are approximate. If included in the plan the proportions will form part of the overall sale area and no responsibility is taken for any errors, omissions or mis-statements. This plan is for illustrative purposes only and should be used as such by any prospective purchaser. The services, systems and appliances shown have not been tested and no guarantee as to their operation.  
 Made with Metropix ©2025



Ashtons Lettings

01904 731404

lettings@ashtonsnet.com